

# Geography in your World!

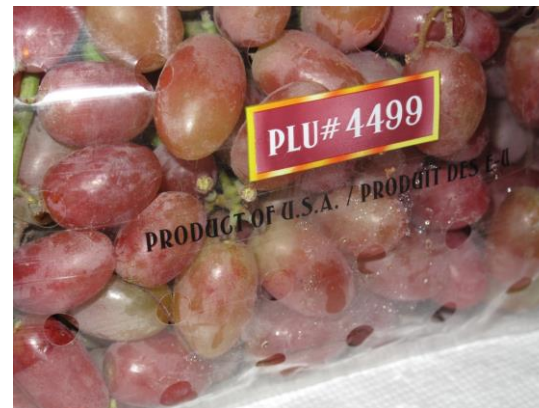
Task: You need to choose **three** of these activities from this PowerPoint and complete during your summer holiday and away from the screen. The idea is that you are still doing something related to your favourite lesson (geography - obviously!) - whilst being away from school!

You will need to bring evidence of your activities (picture, video, etc.) to your first geography lesson.



# Option 1: Food miles survey using contents from the kitchen!

1. Have a look at the contents of your kitchen, and see if you can find at least 6 items with their origin labelled.
2. Then go on to <https://www.foodmiles.com/> and calculate out how many miles each has travelled from the origin to Uxbridge.
3. Write a list of the items, and the number of miles for each.



# Option 2: Global connections survey using clothing they own.



1. Have a look at the clothes/shoes you own (look on the labels) for where they were made.
2. Keep a tally of as many countries as you can, and then present the data mathematically (ie. in a graph) and bring the graph to your first lesson.

Geochallenge: Can you find at least one item of clothing from each continent? (Excluding Antarctica, of course!).

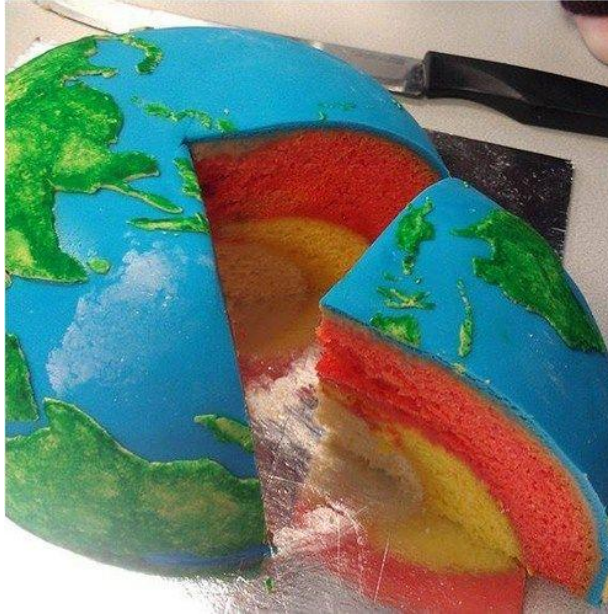


# Option 3: Make a Geography cake!

You could create a waterfall or a

volcano, etc.

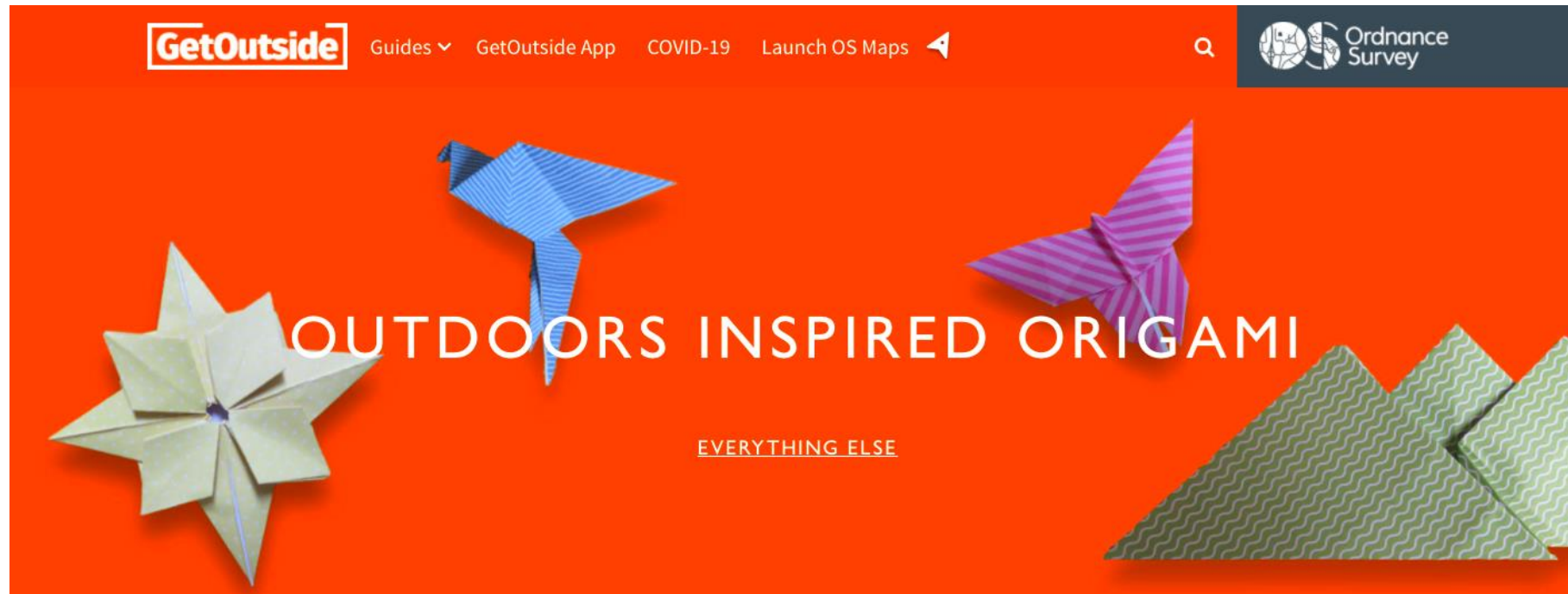
Challenge: Label the parts!



# Option 4: Create some geography inspired origami!

Take a look at this website, and get some templates for your origami!

[Origami Link](#)



# Option 5: Tell me about your hometown!

Tell me a bit more about Uxbridge (or where ever you were born). This could be in any format - a poster, a video, song, poem!



# Option 6: Make a board game to help you test your geographical knowledge!

Need some inspo?

Maybe try to give some of these a geographical twist... [DIY Board Game Ideas](#)



# Option 7: Join the Nationwide Bird Watch!



[Big Garden Birdwatch | Join the fun - The RSPB](#)



1. Go outside and observe the different types of birds you see in your garden/local park/street.
2. Then log on to the link to log the types of birds you saw. This helps to gather information and data about bird populations in local areas.





# Option 8: Go on a walk in your local area, capture images of the environment.

1. What geographical features do you see? Do you see human features? Physical features?
2. Take at least 5 photos and tell me what they are.

(Some pics below from my walks the other day :))

Brook - physical



Greenfield site - physical/human



Plastic pollution in the brook :( - human

